



# ButtonStar Plus Help

**Please Note:** This version of ButtonStar Plus is an evaluation working model. Only nine of the total 66 buttons are user configurable, and other than the Windows Shell option, all other functions are operational. When you register this product you will receive the latest version of ButtonStar and User's Guide.

**ButtonStar Plus** is a program launcher for Windows 3.x, and was designed to replace or use along with *Windows* Program Manager. ButtonStar Plus features 66 buttons that can be configured to launch any program, pif file, or batch file you care to set up. Following are a listing of topics to better help you use [ButtonStar Plus](#).

## Getting Help

### How best to use ButtonStar

### Configuring a Button

### Configuring ButtonStar Preferences

### Adjusting ButtonStar's Appearance

### Re-Arrange the Buttons on ButtonStar

### Using the Run Button

### Navigating ButtonStar

### Product Registration Information

## Configuring a Button



ButtonStar's initial setup automatically configures the first 18 buttons for you. The first three buttons (shown above) are permanent and can not be altered. The remaining pre-configured buttons are set for the standard Windows' programs and accessories. You can configure for these your own use or leave them as is.

### 1. Configure a new Button.

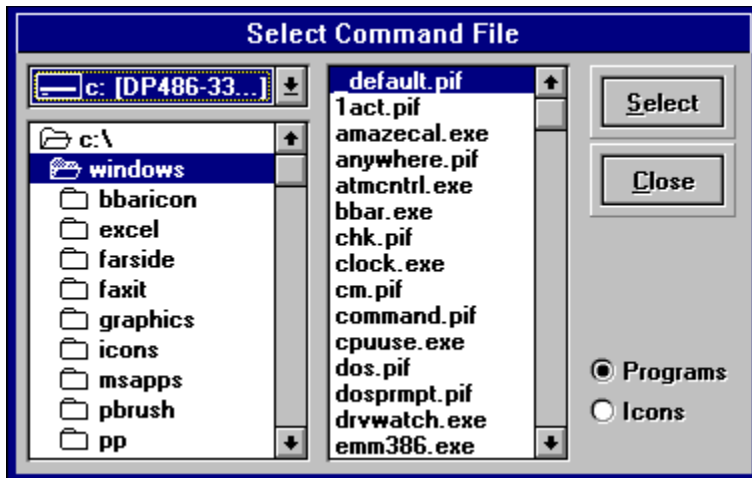
Click the ButtonStar Configuration Button. The *Configuration Menu* will pop up center screen. Now Click on the ButtonStar Button you want to setup up. The Button Number and Current Icon will appear at the top of the menu. *Note:* You can use the keyboard to select a button by holding down the Control Key and pressing a Cursor Arrow Key.

### 2. Selecting a Program

Press the **Browse** Button. A file selection box will pop up, where you select the program file you want to add to ButtonStar. Double-Click the mouse cursor on the selected file (or Click once and press the Select button).

### 3. Select an Icon

You will then see *Icon Select Menu*, where if the selected program is a native window's program, the first 6 icons (If available) will be shown. In addition to the icons embedded in the selected program, you may choose from the 100+ icons in the MOREICON.DLL file by clicking the right hand scroll arrow on the Icon Display box. Now Click the icon that will represent this program to you. The Icon Display and the Browse Box will disappear and Configuration Menu will come to the fore front. The Program Name, Working Directory and Icon Path fields will be filled in with the choice you made. The final step is to type a Program Title in the top field as you want it to appear on the ButtonStar menu. This title will show on the menu bar as you pass the mouse pointer over the icon.



### Configuring a DOS Based Program

Follow the above instructions up to the point of the *Icon Select Bar*. Since a DOS program doesn't have icons embedded in it, none will show on the bar. The File select box will shift to the BBARICON directory. There you can pick from any of the icons shown and apply them to your program selection, or click the **More Icon** button to select from the MOREICON.DLL mentioned above.

### Save and Exit Menu

Press the **Save Button** to save your button configuration, you will notice that Icon you chose will appear on the ButtonStar. Now, pick another button to configure or press the **Exit Button** to close the Configuration Menu.

See [Configuring Other Options](#) for ButtonStar Preferences.

# How To Use ButtonStar

ButtonStar Plus was designed to make the Windows Desktop easier to use. Programs that you use most often are just a mouse click away. Program manager can be very clumsy, and it's icons have a tendency to move around.

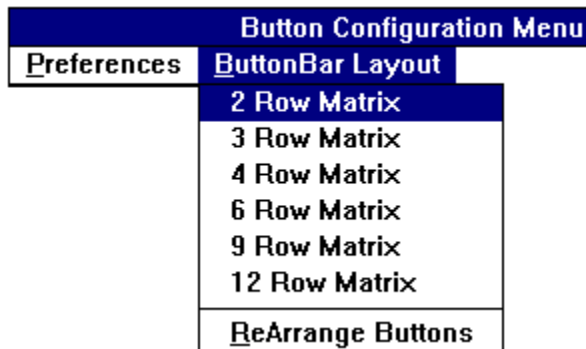
You may use ButtonStar Plus as a Windows shell replacement, or as an alternative program launcher. ButtonStar would be more convenient to use if it is loaded at the start of your windows session. There are two ways to accomplish this, either drag the ButtonStar Icon into your Program Manager **Startup** group (Windows 3.1) or add BBAR.EXE to the "load=" line in your Win.ini file.

To use ButtonStar as your Windows shell, click the ButtonStar Configuration button, then select the "Preferences" menu and click "ButtonStar as Windows Shell" item. The system changes necessary are made automatically for you.

**Network Use.** ButtonStar Plus can load a different configuration other than the default (BBAR.INI), by launching the program with a command line switch. (i.e. BBAR MINE or BBAR %USER%). Environment Variables are supported.

## ButtonStar Screen Appearance

ButtonStar Plus's default layout is 2 rows of 18 buttons, located across the top of the screen. You can change screen position and button matrix adjusting the horizontal width of ButtonStar. For example, place the mouse pointer on the lower right hand corner of ButtonStar. You will notice that the mouse pointer has changed to opposing diagonal arrows, now click and hold the left mouse button down, resize ButtonStar towards the middle of the screen. Once you release the mouse button, ButtonStar will re-display with a different matrix. You can reposition ButtonStar on screen, by placing the mouse pointer on ButtonStar's Menu Bar and holding down the left mouse button. Now move ButtonStar to a new location and release the mouse button.



An additional way to change the ButtonStar layout is to press the ButtonStar Preferences and Configuration Button, then click the ButtonStar Layout menu, and select the matrix you want.

When you exit Windows or close ButtonStar, the last screen position and Button matrix will be saved. The next time you run ButtonStar, it will be in the same place you left it.

## Changing A Button's Position on the Bar

An Icon's position on the bar can be moved to a new location by using the *Re-Arrange Button* option. To employ this feature, follow these steps:

1. Click the ButtonStar Configuration Button, then select the *Button Layout* Menu and click *Re-Arrange Button*. ButtonStar is now in the **Icon Move Mode**, and it will remain this way until it is de-selected by clicking *Re-Arrange Button* again or clicking the **Exit Button**.



2. Now using your mouse, click the Button you wish to move once, then click again and hold the mouse button down. The *Move Icon* will appear, indicating a button move in progress. Now Drag and Drop the *Move Icon* to it's new position. The target button will be switched with the source button.

3. Now click the **Exit Button** to complete this operation.

If you want to move a button to the other ButtonStar page, drag the *Move Icon* over the right or left hand arrows and the page will change. Continue to hold the mouse button down until the *Move Icon* is over the desired location, then release the mouse button.

## Using The Run A Program Button



When you need to run an infrequently used program or maybe a program on a floppy disk, press the *Run A Program* button. A Drive/Directory box will pop-up center screen, where you select the drive, directory and program by clicking on the required box. Consult your Windows manual for a more detailed explanation of File Box navigation.

# Navigating ButtonStar

ButtonStar Plus consists of 72 icon buttons, of which 36 buttons are visible at a time. In the lower left and right hand corners are small arrows pointing in the opposite directions. The right arrow displays buttons 37 through 72, and the left button displays buttons 1 through 36. In addition, movement around the ButtonStar is possible by using combination of the Control Key and direction keys.



## Using the Key Board

- |                                 |  |
|---------------------------------|--|
| 1. <b>Control - Home</b>        | Move to the first button on ButtonStar |
| 2. <b>Control - End</b>         | Move to the last button on ButtonStar  |
| 3. <b>Control - Left Arrow</b>  | Move one button to the Left            |
| 4. <b>Control - Right Arrow</b> | Move one button to the Right           |
| 5. <b>Control - Up Arrow</b>    | Move up one button vertically          |
| 6. <b>Control - Down Arrow</b>  | Move down one button vertically        |
| 7. <b>Control - Page Up</b>     | Display ButtonStar page one            |
| 8. <b>Control - Page Down</b>   | Display ButtonStar page two            |



# ButtonStar Plus

ButtonStar Plus was written by Mark DiBiasio. The ButtonStar Plus program, Help File and associated files remain the property of Mark DiBiasio. One license is granted per registered user, per machine. Corporate and Government Users are required to purchase a site license.

***Any questions or problems please contact:*** Mark J. DiBiasio  
DataDesign Systems, Inc.  
Software City - Gaithersburg  
15958-B Shady Grove Road  
Gaithersburg, Maryland 20877  
Tel. (301) 670-0818  
Fax (301) 330-5087

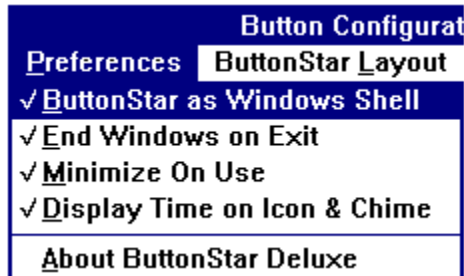
© Copyright 1992 - Mark DiBiasio - September 8, 1992

Windows is a Trademark of Microsoft Corporation

# Configuring Preferences

ButtonStar Plus has the following preferences and configuration options.

## ButtonStar Operation Preferences



**1. ButtonStar as Windows Shell** option. This option sets ButtonStar to be the Windows Shell. De-selecting will revert your system back to where Program Manager is the shell.

**2. End Windows on Exit** option. Choosing this option will end windows and return you to DOS when you click the Exit Button. You will not be queried as to whether or not you really want to end windows. This is a fast exit.

**3. Minimize on Use** option. Select this option if you want ButtonStar to minimize to an icon after a program button is clicked. To choose this option, press then ButtonStar Configuration button, then click then Preferences Menu and click Minimize on Use.

**4. Display Time on Icon & Chime** option. Select this option if you want the ButtonStar Plus icon to display the current time when ButtonStar is minimized, in addition, ButtonStar will Chime on the Hour and Half Hour. The default display is the remaining Windows resources and memory available.

## **Program Launch Switches**

**1. [? switch] Show Files before Program Launch** option. Many Window's programs can be started with a command line switch. For example, say you want to load a Readme.txt file into Notepad, now you can run Notepad and use its Filebox function to load the file or can do this same thing in one motion with ButtonStar. Here's how: Press the ButtonStar Configuration button. On the "Program Name and path field" line add **a space and a "?\*.txt"** (don't add the quote marks), Save and Exit the configuration menu. Now press the Notepad button. Prior to loading the program, a File Selection box will pop-up. Only files ending with the "TXT" extension will appear for selection. You can add multiply file extension delimiters by separating them with a semi-colon. (i.e. **?\*.txt;\*.ini;\*.ans**)

**2. [# switch] Launch Program in a Minimized State** option. There are many programs you may wish to start in an Minimized Icon state. To do this just place a space and a pound sign (#) at the end of the "Program Name and path field" line, (i.e. C:\WINDOWS\CLOCK.EXE # ). **Note:** Holding the Shift Key down and clicking a button

will also start an application in a minimized state.

**3. [% switch] Launch Program with Environmental Variable** option. Network users may wish to load a program with a variable that was set during the network logon process. To use the option, just specify the variable (in upper case letters) on the "Program Name and path field" line, (i.e. F:\WPWIN.EXE F:\WPDOC\%USER%\LETTER.WP). The "%USER%" will be replaced with the environment variable.

**4. [@ switch] Prompt for Command Line** option. Use this option if you want to be prompted for a command line switch before the program is loaded. To do this just place a space and an @ sign at the end of the "Program Name and path field" line, (i.e. C:\WINWORD\WINWORD.EXE @ ). Now, when this button is pushed, a query box will pop up and ask for the command line switch.

## **Getting Help**

Any time you want this Help Menu.. just press the F1 Key.

Programs are executable files, ending with the extension .exe, .com, .bat, or .pif. (i.e. Command.Com)

Programs written and designed to operate in the Windows environment. DOS based will also operate under windows, but they are not aware of windows, nor do they share common functions

# Product Registration

This version of ButtonStar Plus has been distributed on a Shareware basis. You are granted a temporary license to evaluate this product before you purchase it. This evaluation period is not to exceed 15 days from the time you obtain it, after which you must decide to register it or delete it from your computer system.

*Upon Registration you will receive the latest version of ButtonStar Plus. As a bonus for your honesty, you will receive Drive Watch (hard disk monitor program - network compatible) FREE.*

**ButtonStar Plus Registration Fee** is \$18.00 U.S. - International Orders add \$4.00 for postage.

**Please print this page, fill it out and mail along with your payment to the address listed below:**

Name: \_\_\_\_\_  
Company: \_\_\_\_\_  
Address: \_\_\_\_\_  
Suite/PO Box: \_\_\_\_\_  
City: \_\_\_\_\_  
State: \_\_\_\_\_ Zipcode: \_\_\_\_\_  
Phone: \_\_\_\_\_  
Fax: \_\_\_\_\_  
Floppy Disk Type: \_\_ 3½ or \_\_ 5¼ Disks (5¼ sent by default)  
Current ButtonStar Version: \_\_\_\_\_  
Where did you obtain ButtonStar: \_\_\_\_\_  
\_\_\_\_\_

Please make checks or money orders payable to Mark DiBiasio

Mail To:

Mark DiBiasio  
c/o Software City  
15958-B Shady Grove Road  
Gaithersburg, Maryland 20877  
Tel. (301) 670-0818  
Fax (301) 330-5087

\* Maryland Residents add 5% Sales Tax.

**Credit Cards accepted: MasterCard, Visa, American Express and Discover**

Call, Fax or Mail the following information:

1. Credit Card Type
2. Credit Card Number
3. Expiration Date
4. Name as it appears on your card
5. Full Name, Address, and Telephone number.

***Government and Corporate users require a Site License - please contact us directly.***